

Sanitation Administration Office Associations for Cleaning Worker Conditions in Survey Study in Addis Ababa

Massreshaw Assnakew Abebe

Addis Ababa city Cleansing Management office, Addis Ababa, Ethiopia

Email address: lifelongmass[AT]gmail.com

Abstract— In the city currently have more than 568 such associations, and these associations cleaning signed access to sanitation standard practice on the preparation and implementation of a common understanding to keep track of their work. The research that gives the enterprises services properly identify problems and solutions to outstanding service and is looking to enable service offered to divorce complaint, the consumer society. Study documents held in the city's 568 sanitation law recognized organizations working in the organized work of the selected sample of 10 sub-districts in 58 districts, more than 113 model selection methods chosen by associations of these districts are selected by lottery, spending 142 electoral associations cleaning method. Among such problems frequently experienced daily, stabbed, cut/glass fragments, tiny, needle/communicable disease manifestation in connection with dead animals, respiratory illnesses / stuffy nose contain the flu, Science, tonsil revelation lung disease/dog bites, typhoid, typhus, and the ashes of injury šiboni eyes, nose, sore throat pain, headache, skin allergies, ignore identified from blood diseases, medical care and other toxic wastes touch poisoning, back pain, allergies to proceed in the body, stomach cramps and tugging with deportation collisions, the study confirmed the existence of such a situation are administered. As a result, the amount of service provided to pay off conscientious receipt, the service works see and looks for his input in terms of malnutrition, inequality, filled pools throwing garbage out of the streets and out of the belt and free zones, mental patients and people living on the streets and awareness of the problem areas of society, said fillings, due to community associations and awareness of the problem of solid waste. I suspected that a partial them derogatory associations, association members with another job equal attention to each of disagreement, the cooperative unions to mix the rise of so-called toxic waste without waste and sewer, and other waste / drivers, helpers / and arguing with intolerance, lack of adequate pool for lack of a permanent storage convenient and operability are widening.

Keywords— Solid waste, association, cooperative union, service, sanitation practice.

I. INTRODUCTION

Addis Ababa, the capital of the country, regional and global importance because it was the seat of the African Union and various regional and international organizations, is the city of Thyatira time to time, and lighter. At the top of the political, economic and social activities has been carried out for more than four decades to become a clean and attractive environment for its residents, Addis Ababa, the city is a hive of service. Many systems that are've got to work cleaning service in the city proper service management functions in terms of giving attention to the fact that one of the plans for the entire community to achieve tangible results in making the move to extricate synchronized effort to provide better services to reach the level of the Institute Addis Ababa plan, not just plugged solid growth in / 2006.E.C. for Agency working plan.

Customer (customers) interested in the question of creating a full view of the city clean and nice for changing of the city solid waste management still much that remains to be great and the service sector, etc. According to the government for consideration as an opportunity to create a service importance of side by side doing an effective job opportunities at home, which is seventy-six percent visiting dry waste emanating from residents of the town to tackle unemployment by creating micro and small collecting societies organize the cleaning work without competitive participation of working in made. In the city currently have more than 568 such associations, and

these associations cleaning signed access to sanitation standard practice on the preparation and implementation of a common understanding to keep track of their work. However, the situation indicates that there are ongoing activities in accordance with the compliance impressive/2006, good governance research from the document/. Thus, the main focus of the research documents that give enterprises the service properly identify problems and solutions to outstanding service and is looking to enable service offered to divorce complaint, the consumer society.

Addis Ababa, capital of Ethiopia, is a municipal structure of the monarchy. Like other countries, such as cities grow, he spent a solid waste management system as a problem for a long time that the City Solid Waste Management has been working to reveal that information by creating a variety of structures. Since 2001, the city's various economic sectors showing growth with new and rebuilt the city and reconstructed the whole activities and also seasonal solid waste management award for new infrastructure associated with the wastes are a problem only for the public sector to the private sector, recognizing for Government, on-governmental organizations, community offered a job on his own minor communications and organizing the work of organizing the work of more than 6,500 unemployed people in 568 unions by Standard contribute into work / agency report from 2006 /.In reality, however, as trade unions in accordance with the compliance does not mean that granting solid waste collection services. Taking this major display basic challenge. For

instance...Cleaning service delivery standards vacant structure in accordance with a man twice service in house hold generates solid waste collection clearly stated / sanitation standards 2002 / . Pursuant to cleaning stable, facilitation and reached a common understanding with stakeholders, however, a variety of field observations, surveys and consumer complaints to understand the objections that occur at different times now, but in most cases the performance of cooperatives in some districts where there are limited circuits in accordance with the standards set out Service one day a week, for up to 15 days to stay around the mysterious case of solid waste, taking their service, and in view of that situation and had gone solid waste collection service. Thus, the service recipient households / household individual service delivery system is unfair, unwise and an additional fee for the service required, need solid waste collected rather than focusing on the contrary, more profit venture and at the same time, many large organizations and wrapped in garbage Barely law of negotiation policy and unauthorized waste had Answering Service legitimate contributed to the negative effect. Also, unions must notify their family / household solid waste collection program in recognizing for customers. However, now, the majority of society has to understand consumer complaints claim that they are not properly presenting his ministry without computing the program for others and verdant, only to pick up trash and garbage. The government contests the work Associations given their community service / marred by the amount of garbage / paid while they secretly accept money from individuals, household waste, dry progressing in accordance with Standard uncollected and subprogram working activities of the association due to this waste disposal in some areas, the budget to collect from the solid waste production hand by hand without permission to find a pool of dirty door instead of grass and herbs charging rents for running down the workers of worda and drivers for collection of solid waste unmanageable error / pressure / exercise and create a brawl in some areas, the public rejects the complaint correctly spoken, civil associations and shameful waste involvement in working in solid waste collectors moral - immoral another problem, according to an association member should have under standard No. 10 should generally be less than or more members of the Association holding and treat problems such widely diverse. These above mentioned factors on the performance of individual spaces are watched was actually causes a negative impact can be identified to achieve the research and research-based solutions to support incurable if the consumer cleaning service and satisfaction muscle environment clean and beautiful vision of creating a capital Addis Ababa.

II. METHOD AND MATERIAL

2.1. The document Study Method / Methodology of the Study /

The main focus of this research was more than 10 / associations cleaning system for cleaning 142 cities in 58 selected districts of the model selection method service.

2.2 Study Document Format / Design of the study /

This study documents a community survey in shape and standard paper questionnaire to collect the necessary information prepared sample and interview prepared and used in the workplace.

2.3. Sources of Information / Source of data /the main source of sanitation sector unions are supportive of the source / supportive data / trade association's facility of the Addis Ababa Addis Ababa Trade and Industry Bureau, Ministry of Urban Development in Addis Ababa Micro and Small Enterprise Development sub-city, cleaning circuit structures they were.

2.4. Survey Instrument

2.4.1 Early data collection / primary data / Standard paper questionnaire prepared and sent to the unions cleaning / cities augmented by sprinkling the interview- the interview gives information by various participants

2.4.2. Post-data collection / secondary data / the necessary information, reference books bucket recourse to the law and regulations have been in the past.

2.5. Sampling Procedure

Study documents held in the city's 568 sanitation law recognized organizations working in the organized work of the selected sample of 10 sub-districts in 58 districts, more than 113 model selection methods chosen by associations of these districts are selected by lottery, spending 142 electoral associations cleaning method.

2.6. Selection of Subcity and Association

The document included research Association, while the number of 568 electoral lottery systems moved as a model in more than 25% of the 142 associations.

2.6.1. Model number and elective method

TABLE I. Sampling of data representative sample was selected as follows.

S.No	Subcity	Woreda	No of Association	Selected Woreda	Selected Association
1	Arada	10	44	5/ lottry system/	11/lottry system/
2	Yeka	13	60	7	15
3	nefasselek	12	76	6	19
4	lideta	10	37	5	9
5	bole	14	75	7	19
6	Addis ketema	10	57	5	14
7	kirkos	11	58	5	14
8	Akaki	11	34	6	8
9	kolefe	15	82	7	20
10	gulele	10	50	5	13
sum		116	568	58	142

The study was in Addis Ababa Micro and Small-cleaning unions. The study ten sub-cities were taking a sample from each of the city by random sampling / lottery method / using the sub-districts of cities 50% from woreda of the sector level of cleaning organizations in the random sampling / lottery method / were selected using random sampling was carried out under absolute way.

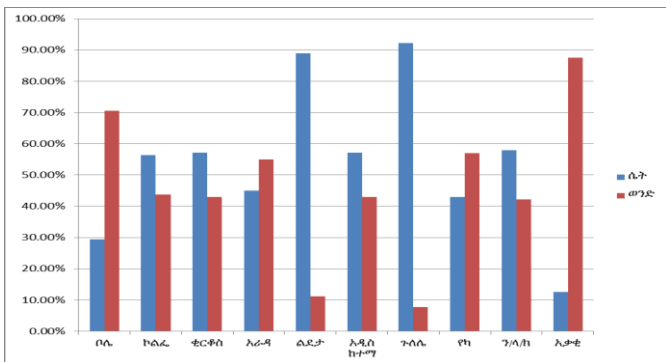
III. DISCUSSION AND RESULT

3.1. Method of Data Analysis

The survey covered a total budget of around fifty eight down to one hundred and thirty five unions in 1391 union members who provided services to these Organizations as part of the study, based on a study of one hundred forty-zone division 106.501 households participation to prepare the study document.

TABLE II. The selection of woreda, association and service gave household.

S.no	Address		association	Zoning	#of public gave service	# of Association
	Subcity	Wored				
1	Bole	7	17	17	14,099	156
2	kolefe	7	16	18	11,825	162
3	kirkose	5	14	16	6,613	154
4	lideta	5	9	10	7,506	87
5	A.ketema	5	14	14	11,200	142
6	Arada	5	11	11	6,879	142
7	Nselek	6	19	19	18,948	202
8	Akaki	6	8	8	5,992	78
9	Yeka	7	14	14	11,905	138
10	Gulele	5	13	13	11,534	130
	Total	58	135	140	106,501	1,391



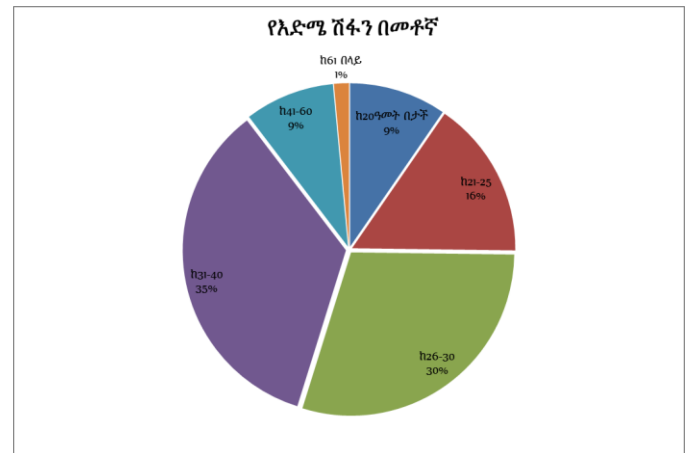
Graph 1. The gender of the association.

TABLE III. The number of gender in the association members.

S.NO	Sub city	Male association number	Female association number	Other information
1	bole	70	30	
2	kolefe	55	45	
3	kirkose	45	55	
4	Arada	45	55	
5	lideta	10	90	
6	A.ketma	45	55	
7	gulele	10	90	
8	yeka	45	55	
9	n.selek	40	60	
10	Akaki	90	10	
	Total	45	55	

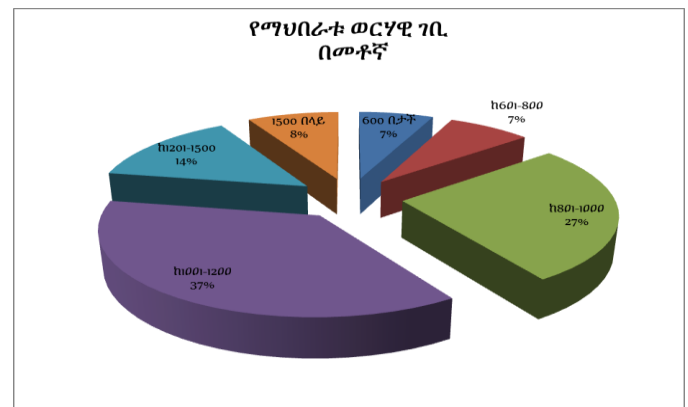
135 unions in unionized members in 1391 micro and small cleaning company, while the remaining 54.1 hundredth of women was 45.9 males. For the subcity expectation of the participation of the women in gulele subcity as 92 percent and for lideta as 88.9 percent of members of the association was women and looked at the role of women covered by the middle were reserved for cities in the new subcity and the

background and the session low participation of women include Akaki Kaliti Sub-City women's share was 12.5 percent, but in general the city the field is pointed out that the participation of women.



Graph 2. The women participation from waste collecting association.

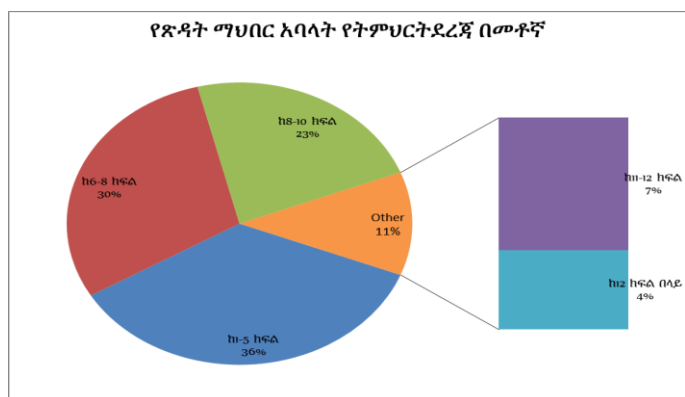
Micro and small cleaning company organized by Member Age constitute the largest portion of the study and a research document was divided into six steps and watched members from 31-40 years of age, 34.8 percent and 32.5 percent share of the age range contained less than 20 years. The remainder of the survey results was shown that average included. And contained a minimum share of a share of 1.48 percent of the members were over 61 years old. Members of those were ranked according to the total of the Association adult age range. This situation requires his associations, labor conventions at capacity in terms of age and younger tell sign was the foundation of society, the sector will prove a lot of work to do in terms of Multi interesting exercises.



Graph 3. The income of association.

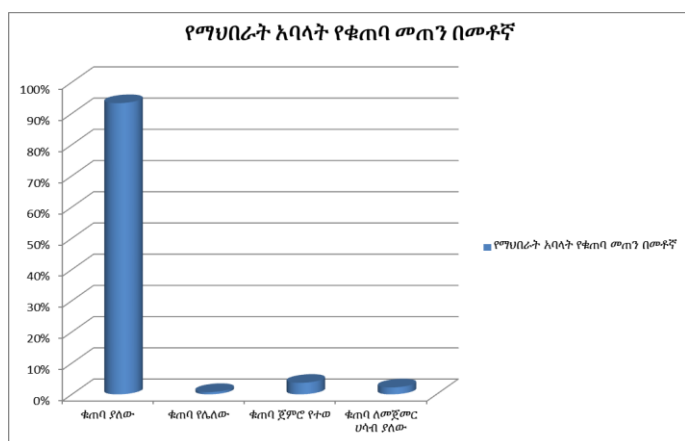
The sector as revenue option of taking and engaged in the sector in terms of revenue association payment creating a different situation, and study the document has been parceled out to six steps. As a result, 37 percent of the members of the association ke1001-1200 silver and 6.67 part of a study of the document was shown that the monthly income of less than 600 pieces of silver. Between 1500 and over 8.15 percentage was known that they are part of the income. As a general income

for their two-part look at the 1000 and 1001 over the facts involved in more than 1001 members betonye 59.25 where up to 1,000 birr participate were members of the association, said the role of 40.78 percent. This means that unemployment was working time greater role in terms of sector income low and small optional.



Graph 4. The literacy of the association.

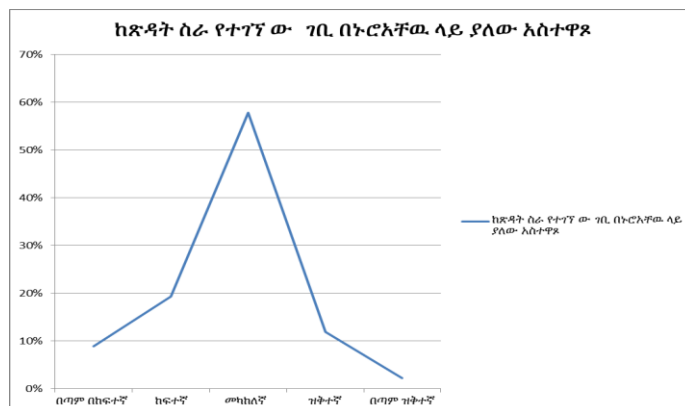
Our level of development and growth in terms of subsistence required for integrated solid waste management system was chaotic out that the sector should be guided by knowledge. Moreover, in view of the dry waste was currently engaged in collecting works of micro and small cleaning members educational level of 35.6 percent of the maximum number of members of the association will take 1-5.29.6 percent and 23 percent of members of the association to 6-8 and 8-10 in the levels of education were included. As a general of the union members in 64.4 per cent of the members of the association represents more than 6 part of the educational sector with its modern sense in doing bemehiberetu in the middle they change jobs awareness training.



Graph 5. The saving of the Mse association.

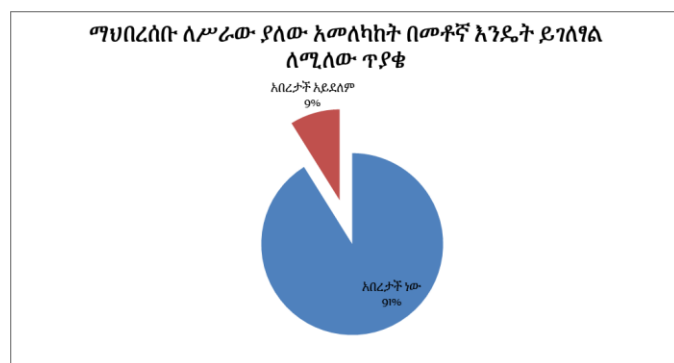
Developing a culture of savings associations in their income compared to 93.3 percent in the study included associations of cooperatives should avoid known as their savings income. It was based on interactive activities to strengthen the role of saving lived in the most sustainable in

terms of making LGBT referred to 3.7 percent from 2.22 percent, associations and unions said the idea to start pointing.



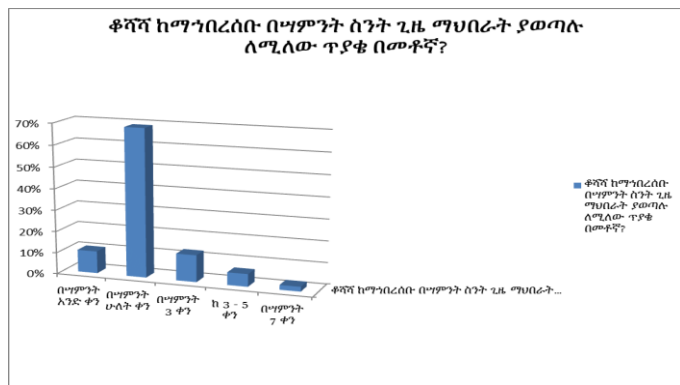
Graph 6. The livelihood of Mse association member.

Members of the sector from the dry waste collection launched in the moat, was well-known that increasing the minimum standard of living of their revenue from previous living time size. But in terms of bringing fundamental changes in their study was shown that middle level on the document warns that 11.9% 57.8% members of the union members of the lower and 2.22% indicates a very low view of the results of a study from collected documents. And 8.89 per cent and 19.3 per cent of union's was shown the result of a very high standard of living standard changed from the study documents were union members believe their practice. As an alternative to taking the business sector and the labor union members, but there were others in the sector to enable them to stay in the sector and fundamental changed in the coming Rev. engaged in cleaning development must create capacity in terms of creating a skirt provided better service.



Graph 7. The attitude of the society stated about the association practice.

How was the Community's view of the job, Micro and small community associations organized cleaning procedures celebrating the success of its members to work in terms of encouraging an attitude explains 91.1 percent of that is encouraging greater efficiency and the role of the members of the union asserting comfortable as possible.

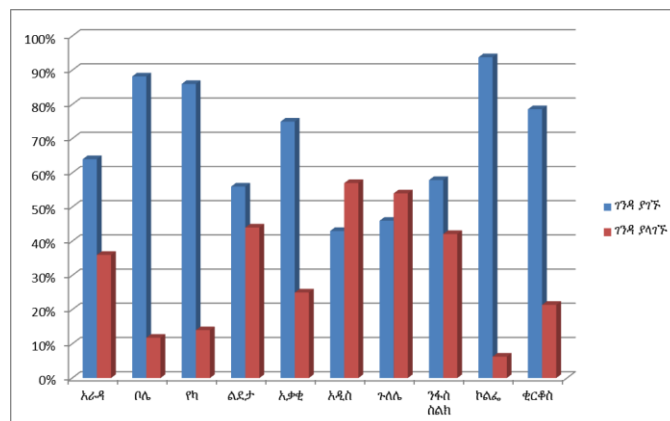


Graph 8. The association service of household.

The study documents the results of the question Returns, Cleaning Addis Ababa Solid Waste Management Agency Public Service Delivery service standards issued by each household two days a week, and the results of the study collection service of solid waste management saved 68.9 percent of service in terms of their compliance equal distribution to know that the service two days a week. The Association member were encouraging that more than 20.75 percent in terms of service delivery, but the rest of the document has been 10.4 percent of the research was to provide service under the base case.97.8 percent of 135 organizations surveyed believe that the study of the document will change the work involved in collecting dry waste living income. And the idea was indicative of the fact that the monthly savings by strengthening associations inits'eri their income. However, 2.22 percent, and how effective a better job of working members of the association must submit their working activates of solid waste collection work and capacity building.

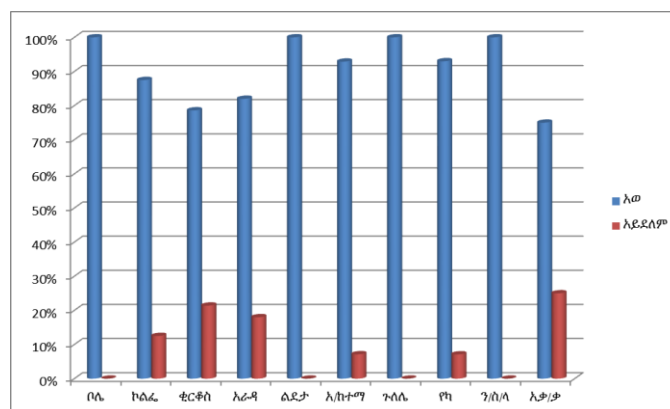
They expressed above was to document the results of the study shows that 88.9 per cent of organizations now work properly build and grow the association and organization, and the remaining 11.1 percent said that the draft organization. This was shown that the system works now, but the next best organization and the city was required to create a structure to carry the responsibility and consistent with the needs and level of development can be overcome. Solid waste collection and organization of his job properly you believe was eligible comfortable 41.5 percent, 50.4 percent believe they are part of partial work 8.15 percent believed the organization practice. Hence the current customary practice based on solid waste collection on the work of the organization effective practice of the facts from the book, and the results of the study in question was involved in the organization to expand the city, located in the development of modern integrated solid waste management system level. In addition, the sector needs to find an effective response to the appropriate organizational gap. Associations using their full potential in terms of doing the same amount of 74.1 percent while the remaining 25.9 percent of attitudinal problem without problems did not respect equal participation in personal work, lack, sickness and other compelling reasons to work. This means that work on the negative impact of weak good governance of solid waste collection and transportation management visible gap, especially from the viewpoint of the problem should set a

clear direction in terms of tort and other legal framework before applied to others.



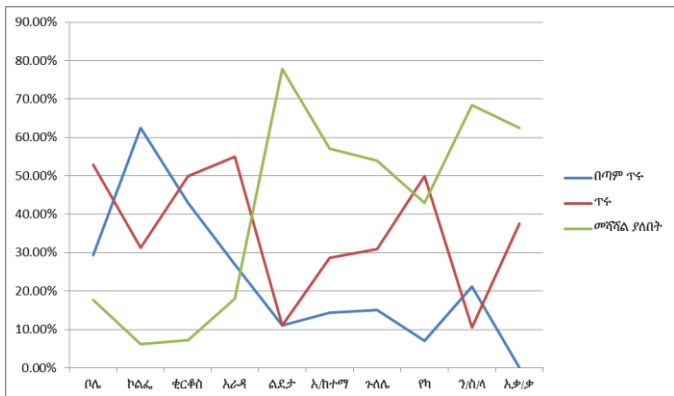
Graph 9. The number of communbin distributive to association.

Addis Ababa City Administration Agency Handling waste container benefit large numbers of pools through the cities of Field work has been distributed enterprises to benefit from the two pools. But who study the above document indicates that 69.6 percent of respondents that found the number of operability, and we responded to that found 30.4 percent of the pool needed. This is the preparation of the next tap storage pools need to have two divisions, based on their compliance with all unions.



Graph 11. The payment of practical working association equal or not.

Solid waste and sanitation unions were settled under the mandate to take place a few individuals employed laborers was moving and equal benefit of the working party interested Center payment to Employer / fee-based for workers now the objective aspect of his micro Running law according to the directive, and is organized by extremist organizations. The above results indicate that 91.9 percent of union members to study the document are equal to 8.15 percent of the remaining shows where the benefits were not equal to a troubled part of the benefit of the members of the association.



Graph 12. The waste transportation for each association.

The document is the result of a study request, 60.7 per cent of the car in terms of employment and equitable warns that 39.3 per cent but the process has made progress tell. We should work in accordance with the conductor based on a clear and consistent understanding and doing.

Cleaning track structure was considered to be illegal and a clear support by supporting the monitoring program. But the only constant monitoring is done by 48.9 percent and 47.4 percent support being inconsistent and not being represented 3.7 per cent never monitoring. So by doing an effective job is to tell indicator in terms of monitoring and technical support to the work program.

The document is the result of a study the question, DPOs income compared to 70.4 percent in the past six months with the most cogent and exhibited a good level, and the remaining 25.2 percent of their income has increased from 2.22 percent Middle income increased relatively no change in rainfall It was encouraging that the state refers to their incomes.

The terms of timeliness of payment of gaining 76.3 percent of unions service payment very let cleaning fee substantially stable compared with the same service charge refers to checking it possible to tell if a job. Their associations service rate service charge must be paid in accordance with the terms set out until he came to the 3rd day of the month.

The study included 135 associations at the Polls in cleansing sectors from them 119 (88.1 percent) of organizations have been asking a cleaning agent in connection with the employment structure, and have been able to take the lion's share in terms of providing the FAQ birthday and Akaki Kaliti Sub-City 100 percent. The remaining 16 (11.9 percent) for unions, but brought no complaint

Micro cleaning structure with defined their complaint 72.7 percent of responses in accordance with the governing contract, but face problems, but 27.3 percent the responding of respond to an invitation to know. So to solve this limitation not giving good service permanent connection when dealing with the complaint and denial of solving the complaints system should be in accordance with the terms of the existing not giving good service getting an immediate response.

IV. CONCLUSION

This study documents the overall social and corporate activity perspective, the significance of our ties in terms of

achieving its goal of conduct and health of the Association level, his behavior and health problems have on the community and they offered tried to broaden the support for attaching a needle. Study document the good side of the observation points in the middle of all funds due to the sector is acceptable from time to time improve, there was a growing income consortia of origin process, solid waste collection work as a career, placing greater role in terms of unemployment cobblestone engaged as members of the association, Dina work has begun in the case of different incomes, but there was a growing process, stating firmly that the energy savings on their monthly income also increased in terms of proper live system like skirt and other economic sectors still exist to benefit the good observed. But all societies in terms of shared savings culture rather than leasing live saving may or leasing company in terms of stages of moving the body and a cleaning lit. Governance structure being limited support from all levels of its members visiting the house dry waste collected more visionary as the next growth development vision in spite of the success of the baggage quality in terms of making spaces appear.

Otherwise solid waste collection is devastating effect on health from the negative impact of the higher its procedures and principles as agreed by members of the Society occasionally manage their society and the community in general. However, the study actually found that business associations on using security resources to work because they are more vulnerable to recurring health problems the Associations. Among such problems frequently experienced daily, stabbed, cut / glass fragments, tiny, needle / communicable disease manifestation in connection with dead animals, respiratory illnesses / stuffy nose contain the flu, Science, tonsil revelation lung disease / dog bites, typhoid , typhus, and the ashes of injury to eyes, nose, sore throat pain, headache, skin allergies, ignore identified from blood diseases, medical care and other toxic wastes touch poisoning, back pain, allergies to proceed in the body, stomach cramps and tugging with deportation collisions, the study confirmed the existence of such a situation are administered.

In terms of attitudes and procedures of union members who engaged in challenges, including service charge at the yelemekefeline significantly delay, consistent and vehicle transportation system based on mutual understanding, information management Living Space As a result, the amount of service provided to pay off conscientious receipt, the service works sea and looks for his input in terms of malnutrition, inequality, filled pools throwing garbage out of the streets and out of the belt and free zones, mental patients and people living on the streets and awareness of the problem areas of society, said fillings, due to community associations and awareness of the problem of solid waste I suspected that a partial them derogatory associations, Association members had another job equal attention to each of disagreement, the cooperative unions to mix the rise of so-called toxic waste without waste and sewer, and liquid waste mixture / drivers, helpers / and arguing with intolerance, lack of adequate pool for lack of a permanent storage convenient and operability are widening.

All we can think generally identified solid waste collection amount of daily activity to be treated with due attention and support to enterprises. In view of the strong points and weaknesses mentioned, although the city was destroyed City member Association working in different conditions almost all participation in solid waste collection and transportation associations with the goal of making the required challenges, the study indicates that they should be given a broad and deep distinguished by-step solution.

ACKNOWLEDGEMENT

I would like to thanks ten sub cities and 30 words cleansing management officers their support during data collection and compilation process.

REFERENCE

- [1] Haan, Coad and Lardinois, Involving of micro and small enterprise in waste management Guide lines for municipal managers, publication of GTZ and ILO, 1998.
- [2] Solid waste management, solid wastes Act, 1996
- [3] ISWM for Addis Ababa, 2010
- [4] Occupational and Environmental health issues of solid waste management. World Bank Washington D.C, 2006
- [5] SBPDA, Assessment of micro and small enterprise engaged in solid waste management in Addis Ababa, 2004.
- [6] Schubler, conceptual frame work for municipal solid waste management in low income countries, 1996.
- [7] The Addis Ababa City Administration Solid Waste Management Policy, 2003.
- [8] The Federal Constitutional micro and small organizations strategic plan, 2003- 2007.
- [9] Urban Construction Waste Management Strategy, 2004.
- [10] WBG, Urban development, World Bank solid waste management, 2001.
- [11] WHO report, 2014.